

# Quietaire heavy duty mufflers

## MA and MB Series

1/8" to 2" BSPT, BSPP or PTF

Reduce the noise levels of pneumatic equipment.

Prevent open line exhaust dangers.

Corrosion resistant.

High flow capacity with low back pressure.

Brass mesh screen and aluminum construction provide improved flow, longer life and cleanable element.

Prevent metal chips, abrasive grits, dust and other contaminants from entering open exhaust ports.

### Technical data

Medium:

Compressed air, filtered, lubricated and non-lubricated

Inert gases

Operation:

Exhaust silencer

Mounting:

Directly in the exhaust port

Maximum Pressure: 300 psig (20.7 bar)

Maximum temperature: 176°F (80°C)

Consult our Technical Service for use below 2°C

### Materials

Element: Brass wire

Base: Aluminum

Shell: Aluminum

### Alternative models

M/S & C/S range of porous plastic silencers.

T40 series of Quietaire sintered bronze silencers



### Male thread

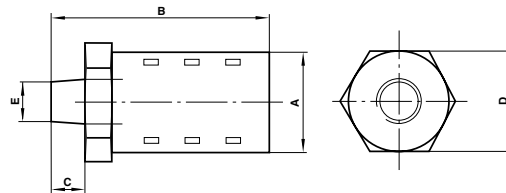
Model	PTF	BSPT	Port size	Flow factor Cv*/C**	oz.
MB001A	MB001B		1/8"	1.3 / 5.3	1.05
MB002A	MB002B		1/4"	2.3 / 9.4	1.05
MBP03A	MBP03B		3/8"	2.9 / 11.8	1.05
MB003A	MB003B		3/8"	4.9 / 20.0	3.53
MB004A	MB004B		1/2"	6.8 / 27.7	3.17
MBP06A	MBP06B		3/4"	7.2 / 29.4	3.17
MB006A	MB006B		3/4"	14.8 / 60.4	15.9
MB008A	MB008B		1"	18.0 / 73.4	14.0
MBP10A	MBP10B		1 1/4"	23.6 / 96.3	14.0

\*Cv measured in US/gall/min \*\*C measured in dm<sup>3</sup>/(s.bar)

### Female thread

Model	PTF	BSPT	BSPP	Port size	Flow factor Cv*/C**	kg
MA001	MA001B			1/8"	0.8 / 3.26	1.05
MA002	MA002B			1/4"	2.4 / 9.79	1.05
MA003	MA003B			3/8"	5.7 / 23.3	3.53
MA004	MA004B			1/2"	6.9 / 28.1	3.17
MA006	MA006B			3/4"	18.0 / 73.4	15.9
MA008	MA008B			1"	20 / 81.6	14.0
MA010			MA010C	1-1/4"	42 / 171.4	21.9
MA012			MA012C	1-1/2"	39 / 159.1	21.2
MA016A			MA016C	2"	59 / 241.0	26.8

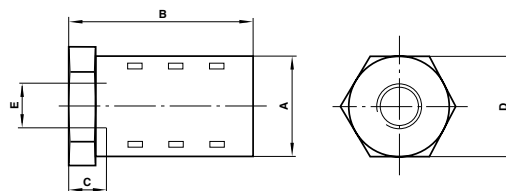
\*Cv measured in US/gall/min \*\*C measured in dm<sup>3</sup>/(s.bar)



### Male thread

A	B	C	D	E*	Model
0.83	2.01	0.35	0.81	1/8"	MB001
0.83	2.17	0.51	0.81	1/4"	MB002
0.83	2.17	0.51	0.81	3/8"	MBP03
1.26	3.46	0.51	1.25	3/8"	MB003
1.26	3.62	0.67	1.25	1/2"	MB004
1.26	3.62	0.67	1.25	3/4"	MBP06
2.01	5.28	0.79	2.00	3/4"	MB006
2.01	5.43	0.91	2.00	1"	MB008
2.01	5.51	1.02	2.00	1 1/4"	MBP10

\* For MB\*\*\*B Rc (BSPT) according to BS21 and ISO - 7/1  
For MB\*\*\*A PTF-SAE SHORT according to ANSI-B1.20.1x



### Female thread

A	B	C	D	E*	Model
0.83	1.65	0.24	0.81	1/8"	MA001
0.83	1.77	0.35	0.81	1/4"	MA002
1.26	3.07	0.35	1.25	3/8"	MA003
1.26	3.27	0.47	1.25	1/2"	MA004
2.01	4.65	0.47	2.00	3/4"	MA006
2.01	4.65	0.59	2.00	1"	MA008
2.52	5.67	0.59	2.50	1 1/4"	MA010
2.52	5.67	0.59	2.50	1 1/2"	MA012
2.99	6.61	0.63	3.00	2"	MA016A

\* For MA\*\*\*B Rc (BSPT) according to BS21 and ISO - 7/1  
For MA\*\*\*A PTF-SAE SHORT according to ANSI-B1.20.1  
For MA\*\*\*C G (BSPP) according to BS2779 and ISO-228/x

## Additional ranges

### Sintered bronze mufflers

Size	NPT model	Cv
10-32	MS000A	
1/8	MS001A	0.7
1/4	MS002A	1.4
3/8	MS003A	1.9
1/2	MS004A	3.8
3/4	MS006A	6.5
1	MS008A	10.5
1-1/4	MS010A	11.8
1-1/2	MS012A	18.3

Reduce the noise levels of pneumatic equipment.  
**Compact and efficient.**  
**Screw directly into the exhaust port.**  
**Prevent the ingress of dirt.**



Size	BSPT model	Size	BSPP model	Cv
		M5	T40M0500	0.2
1/8"	T40 B1800	1/8	T40C1800	0.54
1/4"	T40 B2800	1/4	T40C2800	1.6
3/8"	T40 B3800	3/8	T40C3800	3.5
1/2"	T40 B4800	1/2	T40C4800	5.1
3/4"	T40 B6800	3/4	T40C6800	9.0
1"	T40 B8800	1	T40C8800	11.6

### Porous plastic mufflers

Size	NPT Model	BSPP Model	Cv
M5		M/S0	0.31
1/8	C/S1	M/S1	0.98
1/4	C/S2	M/S2	1.93
3/8	C/S3	M/S3	3.75
1/2	C/S4	M/S4	
3/4	C/S6	M/S6	7.79
1	C/S8	M/S8	9.63

Reduce the noise levels of pneumatic equipment.  
**Compact, efficient and lightweight.**  
**Screw directly into the exhaust port.**  
**Prevent the ingress of dirt.**  
**Low cost.**



### Stem silencers

Size	NPT Model
5/32"	T45Y0002
1/4"	T45Y0004
3/8"	T45Y0006
6mm	T45P0006
8mm	T45P0008
10mm	T45P0010
12mm	T45P0012

Reduce the noise levels of pneumatic equipment.  
**Compact, efficient and lightweight.**  
**Insert directly into Push-in fitting exhaust port.**  
**Prevent the ingress of dirt.**  
**Low cost.**



### Quietaire coalescing muffler

Port Size NPT	Part Number	Flow Factor Cv
1/2	MC004A	5.2
3/4	MC006A	9.2
1	MC008A	15.7

**Easily replaceable cartridge element**  
**Removal of oil mist from exhaust air provides cleaner work environment.**  
**Rugged, corrosion resistant construction**



## Additional ranges

### Plastic speed control

Port Size NPT	Part Number	Flow Factor Cv
1/2	MQ004A	2.5
3/4	MQ006A	2.5
1	MQ008A	7.7
1-1/4	MQ010A	7.7

Easily replaceable cartridge element  
Removal of oil mist from exhaust air provides cleaner work environment.  
Rugged, corrosion resistant construction



### Sintered bronze speed control

Port Size NPT	Part Number
1/8	MM001A
1/4	MM002A
3/8	MM003A
1/2	MM004A
3/4	MM006A
1	MM008A

Cleanable 40-micron sintered bronze diffuser element.  
Corrosion resistant construction.  
Adjustment screw to control rate of exhaust air flow.  
Adjustment screw facilitates a smooth, steady change to flow when turned.



### High performance flow control Quietaire muffler

Port Size	Part Number		Max. Flow Factor Cv
	NPT	Metric or ISO G	
M5	-	T20M0500	0.07
1/8	T20A1800	T20C1800	0.4
1/4	T20A2800	T20C2800	0.8
3/8	T20A3800	T20C3800	1.7
1/2	T20A4800	T20C4800	2.4

Cleanable 40-micron sintered bronze diffuser element.  
Corrosion resistant construction.  
Adjustment screw to control rate of exhaust air flow.  
Adjustment screw facilitates a smooth, steady change to flow when turned.



### Breather vents

Port Size NPT	Part Number	Flow Factor Cv
1/8	MV001A	0.1
1/4	MV002A	0.1
3/8	MV003A	0.3
1/2	MV004A	0.5
3/4	MV006A	1.3
1	MV008A	1.6
1-1/4	MV010A	4.2
1-1/2	MV012A	5.2

Port Size ISO G	Part Number	Flow Factor Cv
1/8	M/1511	0.45
1/4	M/1512	1.1
1/2	M/1514	1.5
3/4	M/1516	3.9
1	M/1518	5.5

Prevent the ingress of dirt with minimal flow restriction.  
Robust and compact.  
Screw directly into the exhaust port.

